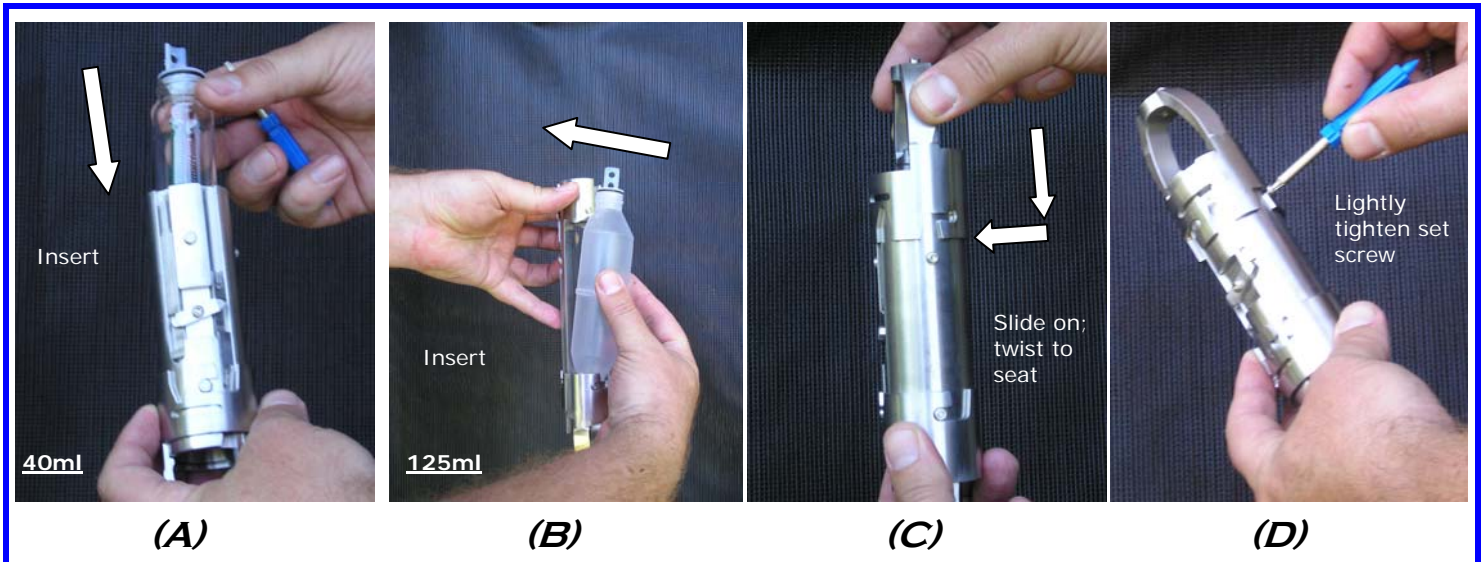


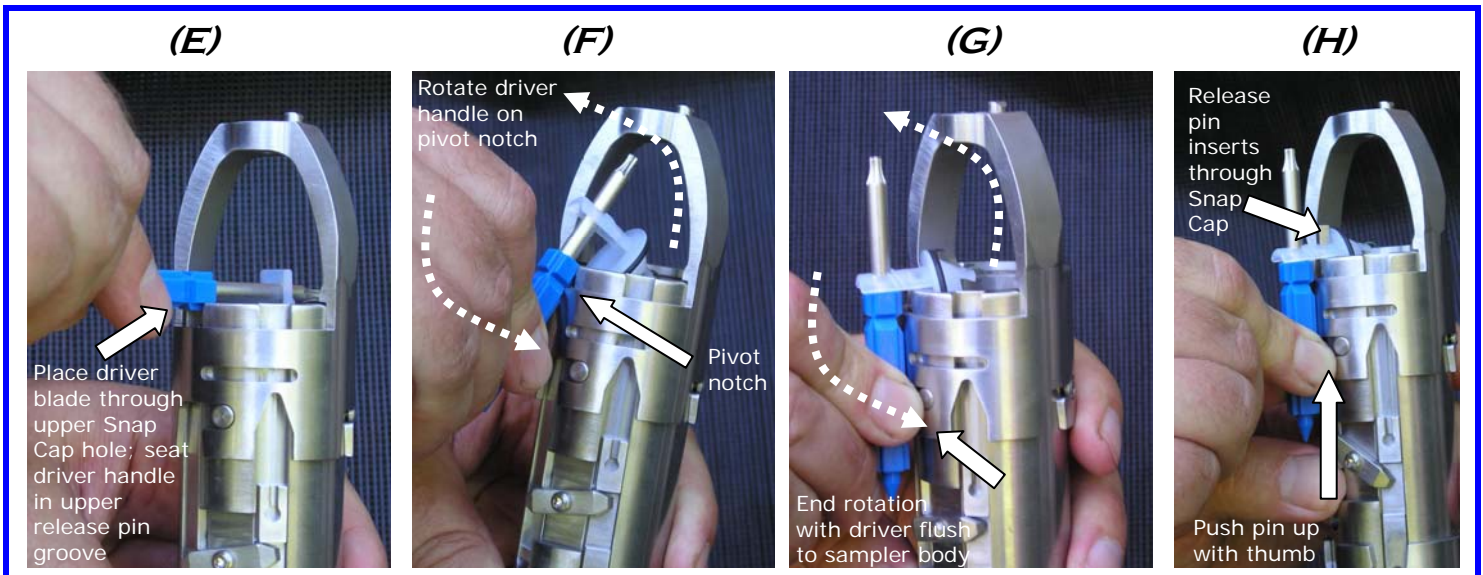
# **SNAP SAMPLER DEPLOYMENT (PAGE 1 OF 2)**

## **INSERTING AND SECURING BOTTLES**



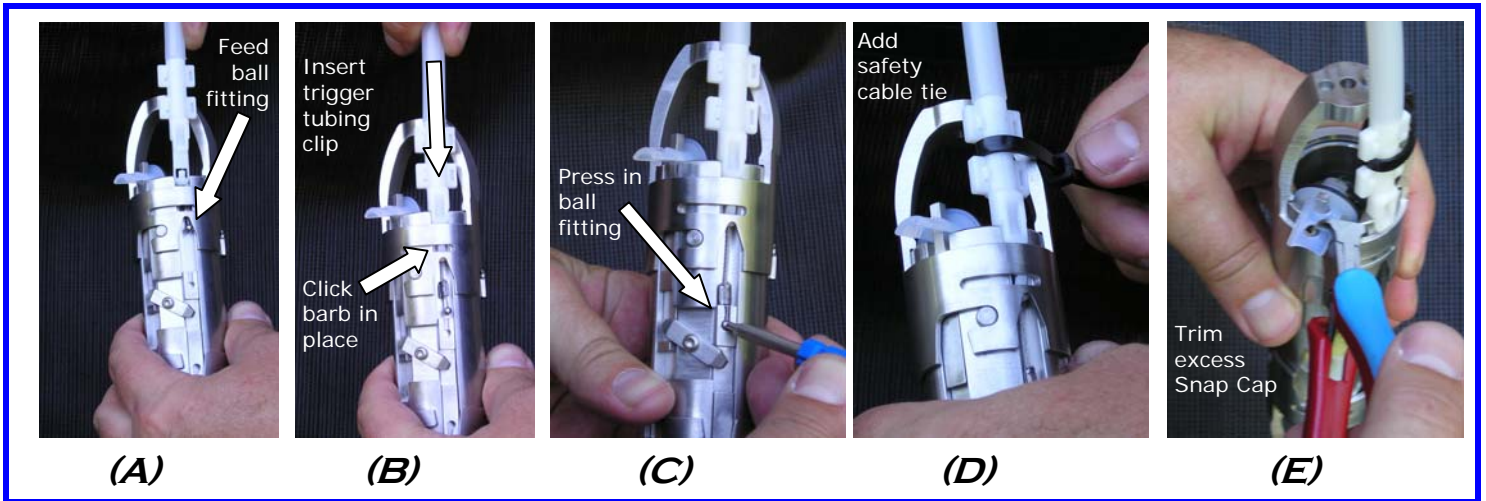
- A) INSERT 40 ML VOA INTO TOP OF 40 ML SNAP SAMPLER ...OR...**  
**B) INSERT 125 ML POLY INTO BACK SIDE OF 125 ML SNAP SAMPLER.**  
**C) SLIDE CONNECTOR OVER SAMPLER AND TWIST CLOCKWISE TO SEAT.**  
**D) SECURE CONNECTOR AND BOTTLE WITH SINGLE SET SCREW.**  
**E) INSERT SNAP DRIVER BLADE INTO UPPER HOLE OF SNAP CAP (INSERT BLADE INTO CONCAVE SIDE OF CAP, ONTO THE SMOOTH PART OF THE DRIVER BLADE SHAFT, PAST THE TIP); SEAT DRIVER HANDLE IN UPPER RELEASE PIN GROOVE.**  
**F) ROTATE SNAP DRIVER ON THE PIVOT NOTCH IN THE DRIVER HANDLE.**  
**G) PIVOT ON PIVOT NOTCH UNTIL DRIVER HANDLE IS FLUSH WITH SAMPLER BODY AND SNAP CAP IS IN ITS SEAT; GRASP DRIVER BY TOP SIDE TO KEEP FINGERS CLEAR OF DRIVER ALIGNMENT WITH SAMPLER BODY.**  
**H) USE THUMB OF THE HAND HOLDING THE SAMPLER TO PUSH RELEASE PIN UP TROUGH LOWER HOLE IN THE SNAP CAP; REPEAT “E” THROUGH “H” FOR EACH SNAP CAP IN ALL SAMPLERS.**

## **SETTING SNAP CAPS**



# **SNAP SAMPLER DEPLOYMENT (PAGE 2 OF 2)**

## **ATTACHING TRIGGER**



- A) INSERT BALL END OF TRIGGER IN UPPER RELEASE PIN GROOVE.**
- B) CLICK TRIGGER BARB UNTIL IT CLICKS INTO POSITION.**
- C) PRESS BALL FITTING INTO RELEASE PIN.**
- D) ATTACH SAFETY CABLE TIE.**
- E) TRIM PROTRUDING SNAP CAP BETWEEN RIBS.**
- F) LOWER SAMPLER TO DEPTH, THEN ATTACH TO DOCKING STATION.**
- G) SEAT PLASTIC TRIGGER FITTING INTO WING SLOTS ON DOCK; THREAD TRIGGER LINE INTO DOCK'S CABLE RETAINER.**
- H) TO SAMPLE, PULL TRIGGER CABLE (HOLD DOCK IN PLACE IF DOCK IS NOT PERMANENTLY SECURED); REMOVE TRIGGER FROM DOCK AND RETRIEVE SAMPLERS.**

## **WELL HEAD DOCK ATTACHMENT**

